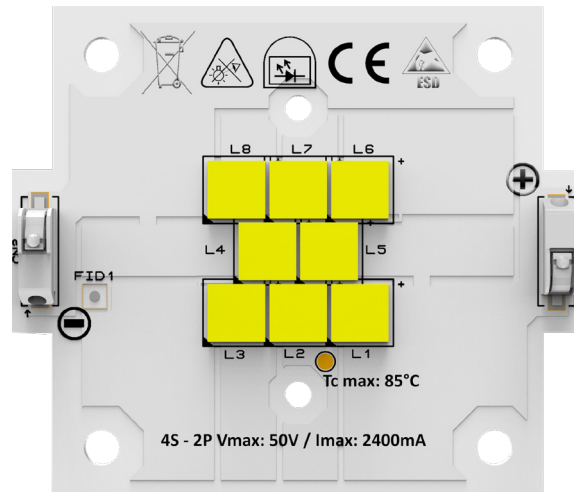


PRODUCT PHOTO



SPECIFICATIONS

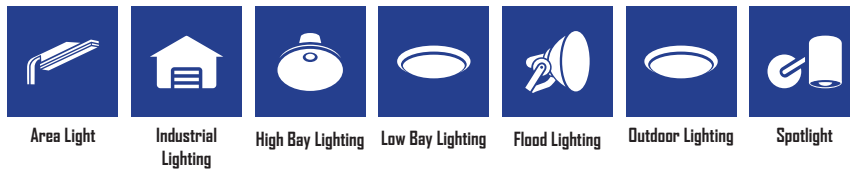
- Default driving method is constant current input
- CCT Range from 2200K up to 6500K
- This module is standard and can be connected as 4 Series 2 Parallel.
- Luminous flux range from 3600 lm to 18100 lm
- Efficacy of the module up to 210 lm/W
- CRI 80 is standard, CRI 70 and CRI 90 are available
- Outstanding system color tolerance MacAdam 3 over the full operating area
- Simple installation (e.g. screw)
- Long life-time > 60,000 hours
- 5 years guarantee at specified conditions



For your orders please call us:

+90 444 27 33

APPLICATIONS



Area Light

Industrial
Lighting

High Bay Lighting

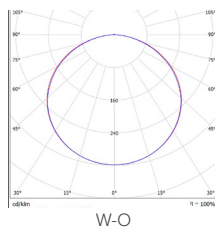
Low Bay Lighting

Flood Lighting

Outdoor Lighting

Spotlight

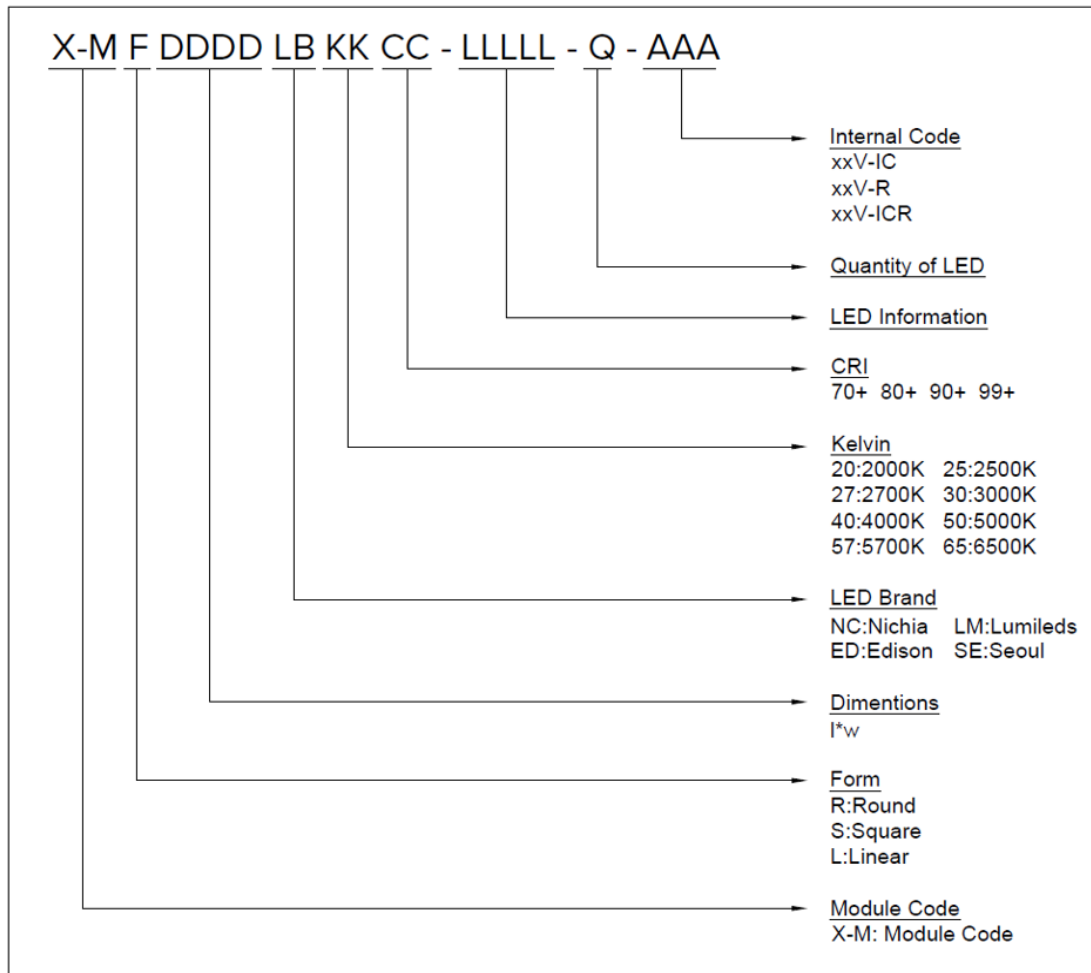
PHOTOMETRY



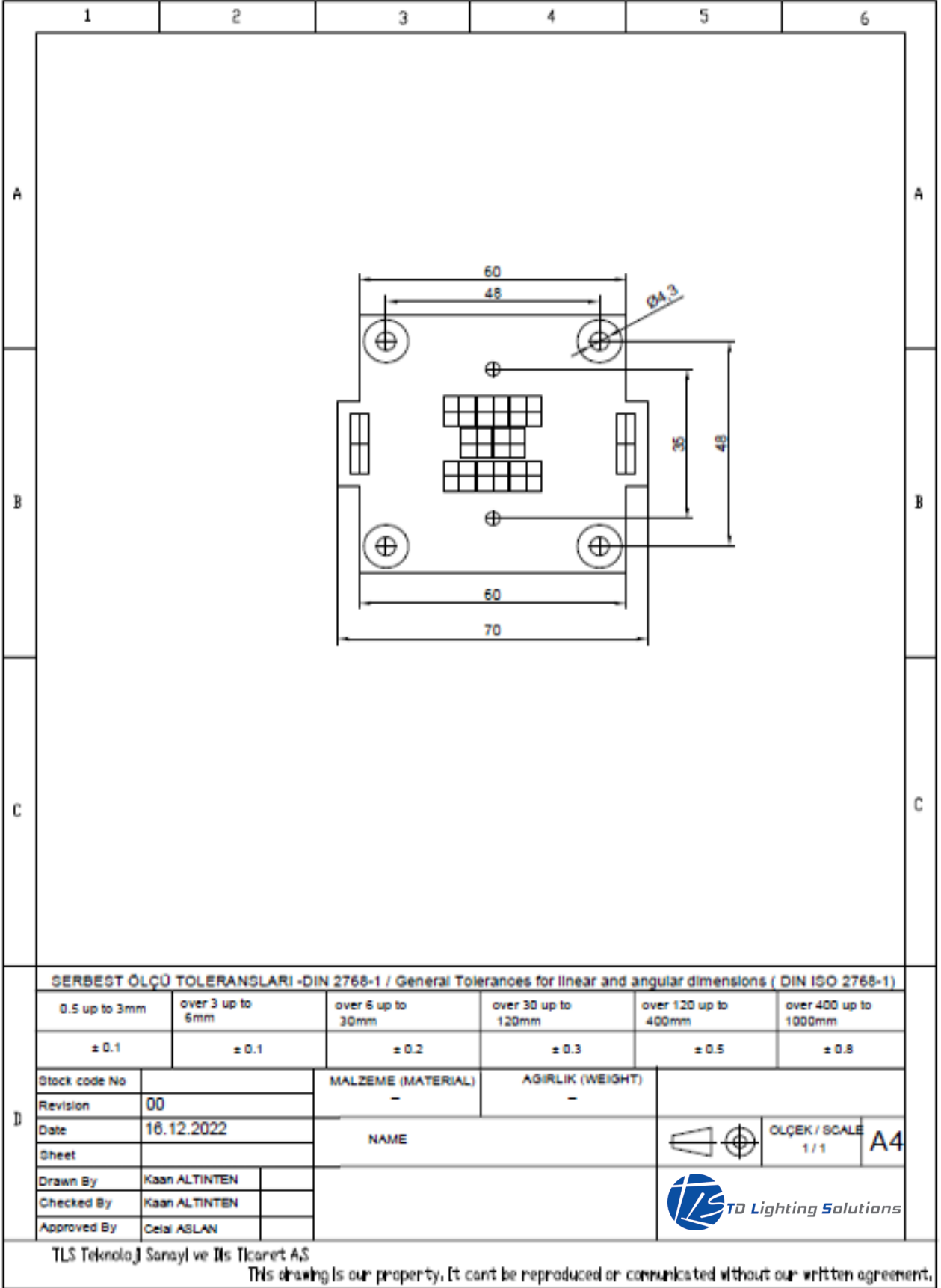
TECHNICAL DATA

Beam Angle	120°
Ambient temperature range	-25° ~ +55°C
Tc max	85°C
LUXEON 7070	
Max. DC forward current	2400mA
Typical voltage of LED Module at max current	50V
Insulation test voltage	2kV
ESD classification	Class 1
Risk group (EN 62471:2008)	2
Type of protection	IP00

ORDERING INFORMATION



X-MS6070LM-4070-7070-8 MECHANICAL DRAWINGS



LIFE TIME

MODEL NUMBER: 7070



DEKRA iST Reliability Services Inc.
Reliability Testing Laboratory
1F, No.22, Pu-ding Rd., Hsin - chu City, Taiwan, R.O.C.
Tel: 886-3-579-5766, Fax: 886-3-579-5756
<http://www.dekra-ist.com>

Report No.: DH2104280010A-1
Report Issue Date: Oct 31,2022
Page 1 of 29
Version : B

LM-80-15 LUMEN MAINTENANCE TEST REPORT

Company : Lumileds LLC
Address : 370 W. Trimble Road, San Jose, CA 95131, USA
Model Name : LUXEON 7070
Part Number : L170-2780701200000
Date Received : Apr 26, 2021
Date Tested : May 13, 2021 ~ Sep 6, 2022

TESTING LABORATORY IS ACCREDITED BY:

ISO 17025 accredited in respect of laboratory is approved by TAF
EPA-Recognized Laboratories No. : 1112214
ista certified laboratory (ID: ST-9389)

Signed for and on behalf of
DEKRA iST Reliability Services Inc.

Jurnal
Approver

Jurnal
Reviewer

Max Chen
Engineer

LUMILEDS CONFIDENTIAL: This document contains confidential and proprietary information of Lumileds LLC.
Any reproduction, use or disclosure hereof without the express written consent of Lumileds LLC is strictly prohibited.
Report number 855d2 issued to ingolf.saschka@lumileds.com on Thu Nov 24 04:17:35 2022

LEGAL NOTICE

Product information provided by TLS Teknoloji Sistemleri San ve Dış Tic AŞ ("TLS") in this document is believed to be correct and accurate. TLS reserves the right to change/correct the specifications and other data or information relating to products without notice but TLS accepts no liability for errors that may appear in this document, howsoever occurring, or liability arising from the use or application of any information or data provided herein. Neither the supply of such information, nor the purchase or use of products conveys any licence or permission under patent, copyright, trademark or other intellectual property right of TLS or third parties.

Products sold by TLS are subject to its standard Terms and Conditions of Sale that are available on request. No warranty is given that products do not infringe the intellectual property rights of third parties, and furthermore, the use of products in certain ways or in combination with TLS, or non-TLS furnished equipments/components may infringe intellectual property rights of TLS.

The purpose of this document is to provide information only and it may not be used, applied or reproduced (in whole or in part) for any purpose nor be taken as a representation relating to the products in question. No warranty or guarantee express or implied is made concerning the capability, performance or suitability of any product, and information concerning possible applications or methods of use is provided for guidance only and not as a recommendation. The user is solely responsible for determining the performance and suitability of the product in any application and checking that any specification or data it seeks to rely on has not been superseded.

Products are intended for normal commercial applications. For applications requiring unusual environmental requirements, extended temperature range, or high reliability capability (e.g. military, or medical applications), special processing/testing/conditions of sale may be available on application to TLS.

CONTACT

TLS Teknoloji Sistemleri San ve Dış Tic AŞ

Akçaburgaz Mahallesi 3080. Sokak No:5 Esenyurt / İstanbul / TURKEY

info@tsteknoloji.com
+90 444 27 33