

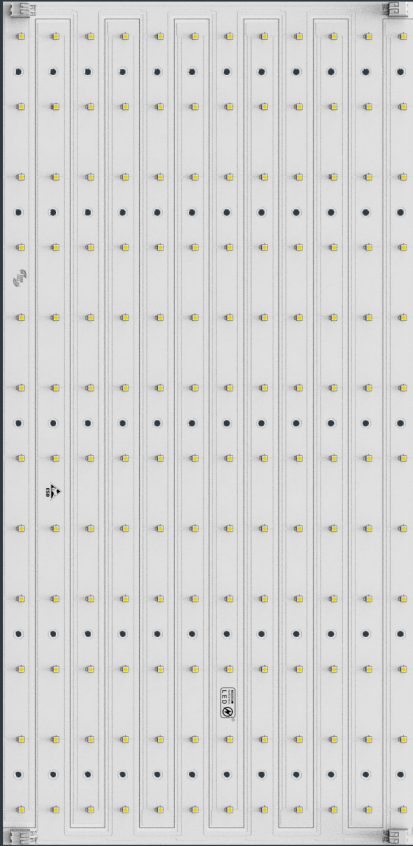


TD Lighting Solutions

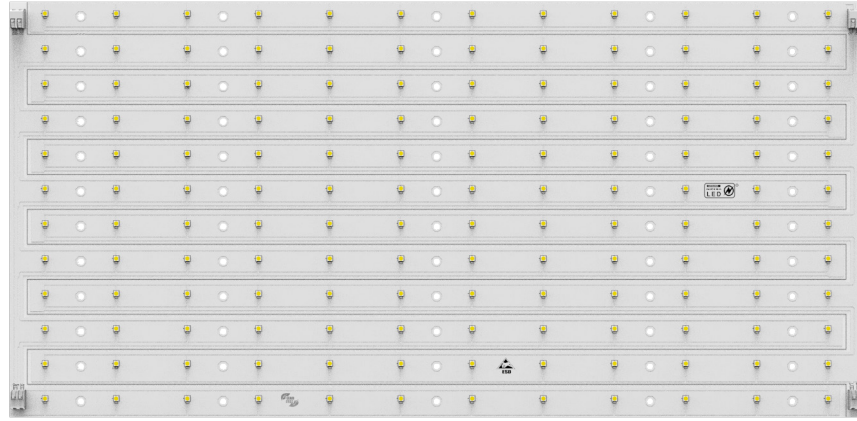
X-MS250510LMxx-2835xx-72/144

Square Series

www.tlsteknoloji.com



PRODUCT PHOTO



SPECIFICATIONS

- Default driving method is constant current input
- CCT Range from 2000°K up to 6500°K
- Luminous flux range from 1596 lm to 3292 lm
- Efficacy of the module up to 200 lm/W
- CRI 80 is standart, CRI 70 and CRI 90 are available
- Outstanding system color tolerance MacAdam 3 over the full operating area
- Simple installation (e.g. screw)
- Long life-time > 60,000 hours
- 5 years guarantee at specified conditions



For your orders please call us:

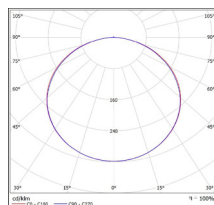
+90 444 27 33

APPLICATIONS



Office Lighting

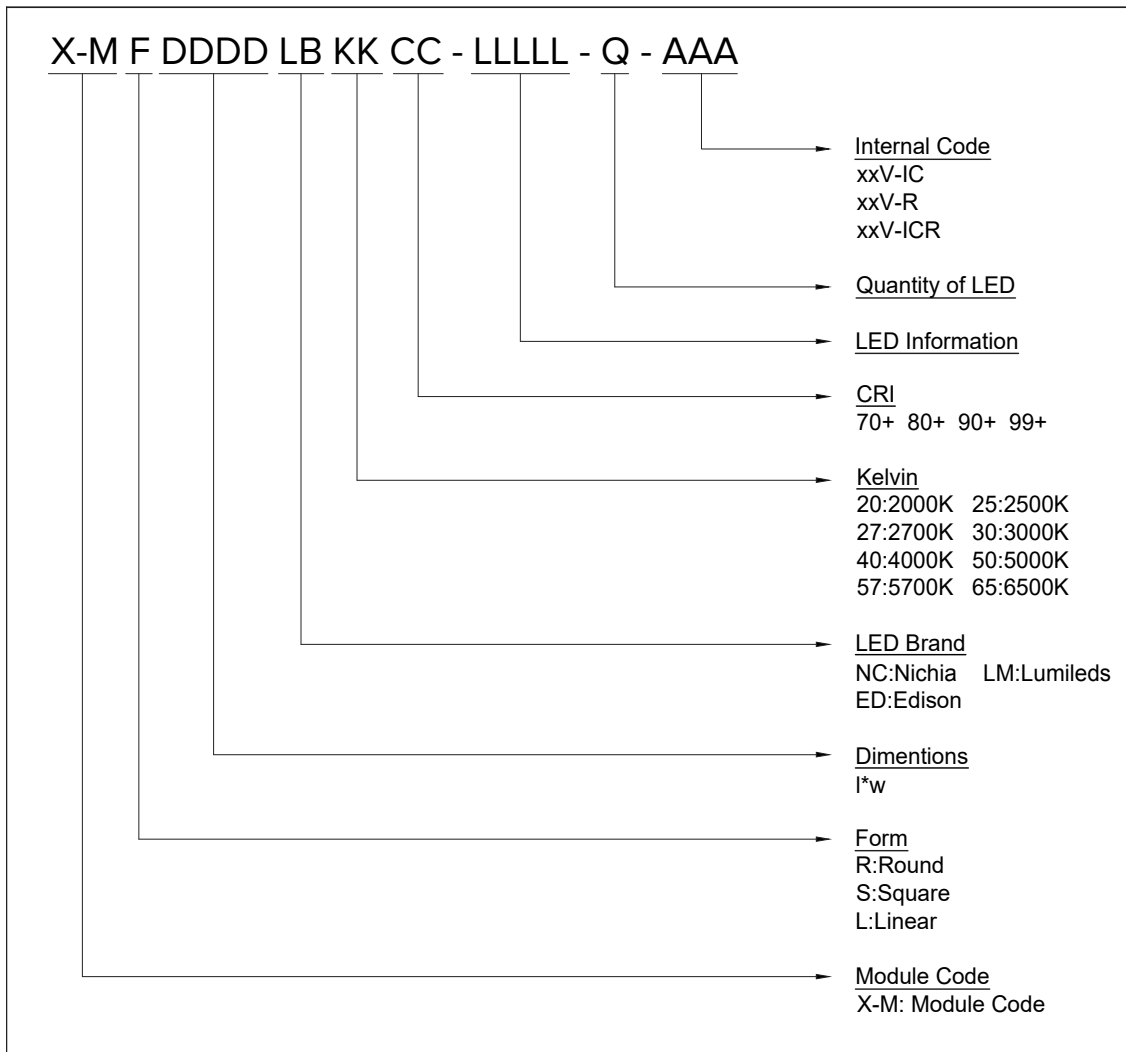
PHOTOMETRY



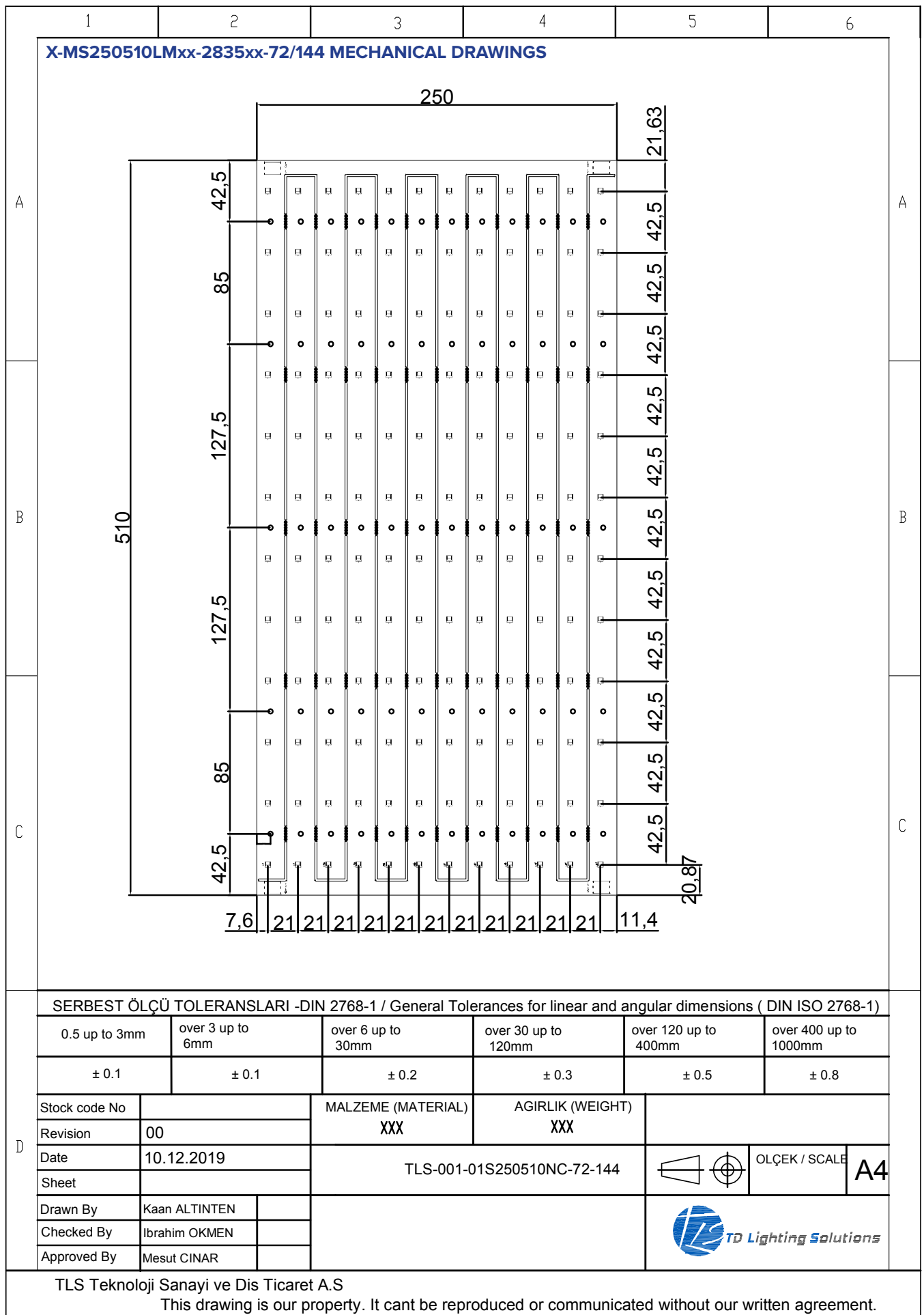
TECHNICAL DATA

Beam Angle	120°
Ambient temperature range	-25° ~ +55°C
Tc max	85°C
Max. DC forward current	1050 mA
Typical voltage of LED Module at max current	18 V
Insulation test voltage	2kV
ESD classification	Class 1
Risk group (EN 62471:2008)	1
Type of protection	IP00

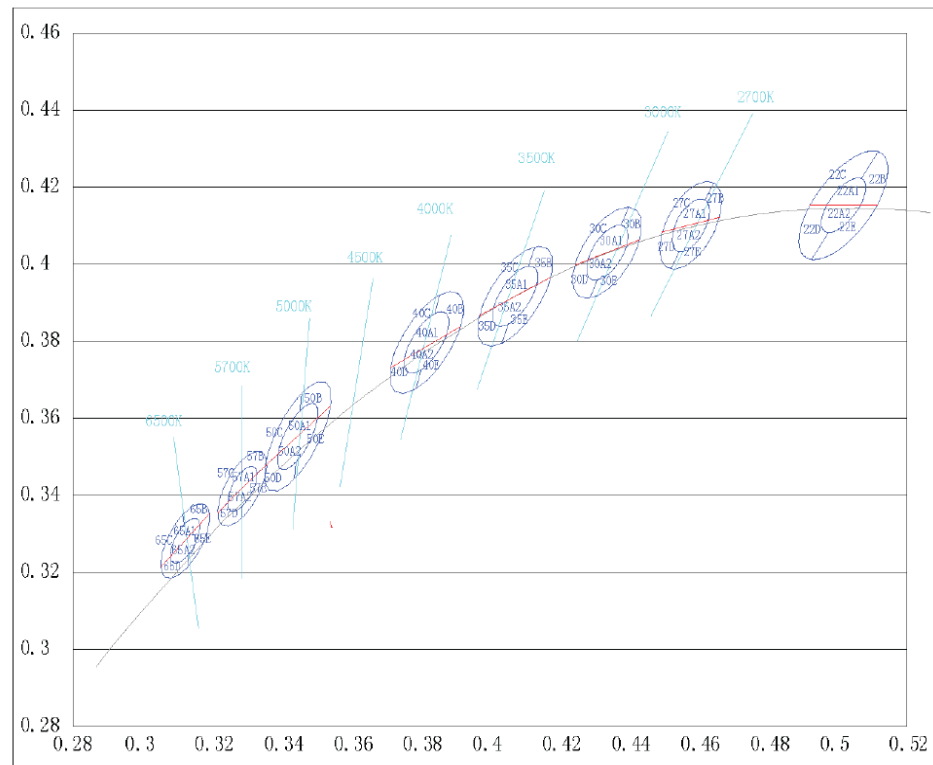
ORDERING INFORMATION



LED	2700°K (CRI 80)	3000°K (CRI 80)	4000°K (CRI 80)	5000°K (CRI 80)	6500°K (CRI 80)
2835 HE	1	1,09	1,2	1,2	1,2
2835 RA-2F1	0,875	0,916	1	1	1
2835 RA-2Q1	0,74	0,78	0,86	0,86	0,86



CCT AND BINNING INFORMATION

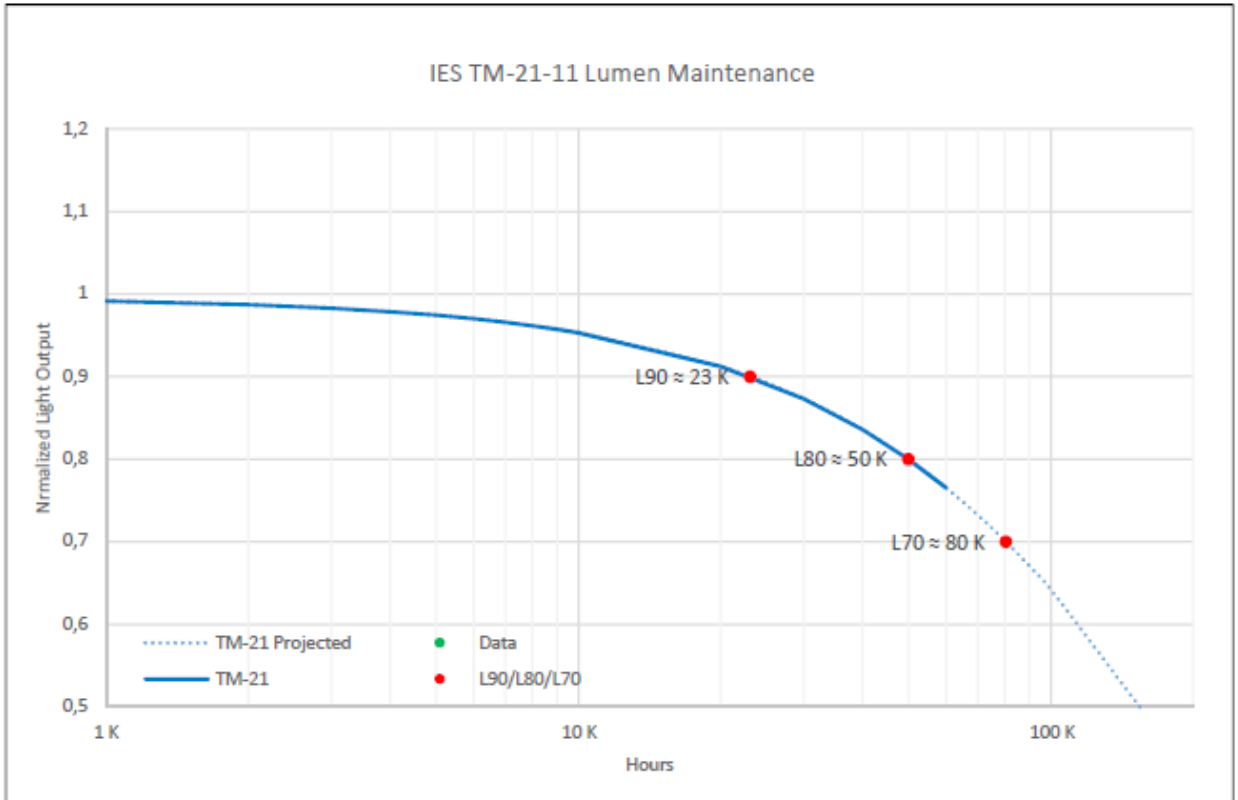


LIFE TIME

MODEL NUMBER: 2835RA-xxx

Manufacturer	Lumileds
Model	2835RA
Test Report applies to the following part number	L128-4080RA3500xxx
Drive current for each LED package/array/module (mA)	150
In-situ case temperature (Tc, °C)	85

Part Number Tested	L128-3080RA35000Q1
Sample size	25
Number of failures	0
DUT drive current used in the test (mA)	150
Test duration (hours)	9000
Test duration used for projection (hour to hour)	4000-9000
Tested case temperature (°C)	85
α	4,3890E-06
B	9,9600E-01
Calculated L70(10k) (hours)	80352
Reported L70(10k) (hours)	> 54000



LEGAL NOTICE

Product information provided by TLS Teknoloji Sistemleri San ve Dış Tic AŞ ("TLS") in this document is believed to be correct and accurate. TLS reserves the right to change/correct the specifications and other data or information relating to products without notice but TLS accepts no liability for errors that may appear in this document, howsoever occurring, or liability arising from the use or application of any information or data provided herein. Neither the supply of such information, nor the purchase or use of products conveys any licence or permission under patent, copyright, trademark or other intellectual property right of TLS or third parties.

Products sold by TLS are subject to its standard Terms and Conditions of Sale that are available on request. No warranty is given that products do not infringe the intellectual property rights of third parties, and furthermore, the use of products in certain ways or in combination with TLS, or non-TLS furnished equipments/components may infringe intellectual property rights of TLS.

The purpose of this document is to provide information only and it may not be used, applied or reproduced (in whole or in part) for any purpose nor be taken as a representation relating to the products in question. No warranty or guarantee express or implied is made concerning the capability, performance or suitability of any product, and information concerning possible applications or methods of use is provided for guidance only and not as a recommendation. The user is solely responsible for determining the performance and suitability of the product in any application and checking that any specification or data it seeks to rely on has not been superseded.

Products are intended for normal commercial applications. For applications requiring unusual environmental requirements, extended temperature range, or high reliability capability (e.g. military, or medical applications), special processing/testing/conditions of sale may be available on application to TLS.

CONTACT

TLS Teknoloji Sistemleri San ve Dış Tic AŞ

Akçaburgaz Mahallesi 3080. Sokak No:5 Esenyurt / İstanbul / TURKEY

info@tsteknoloji.com
+90 444 27 33