

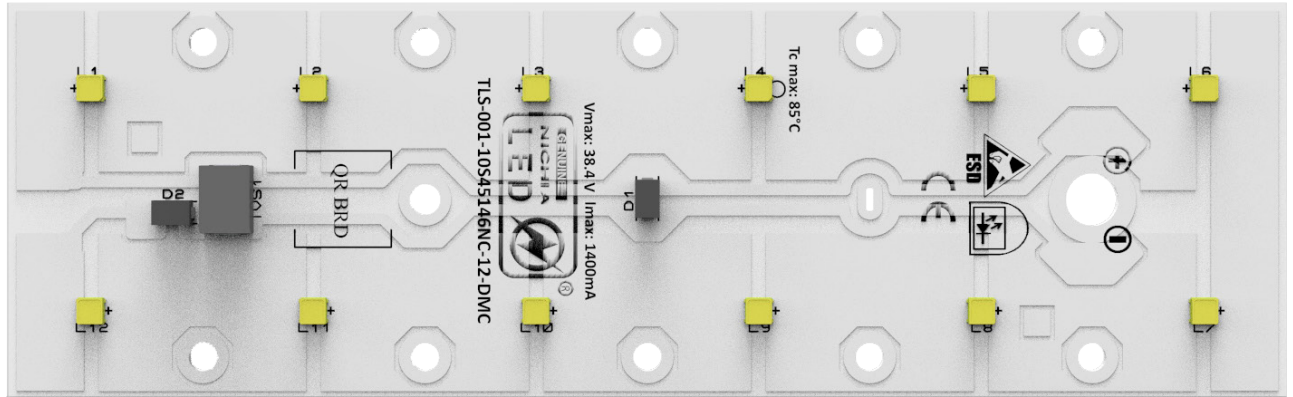
**TD Lighting Solutions**

## **X-ML45146NCxx-NVSxE21A-12**

Linear Series

[www.tlsteknoloji.com](http://www.tlsteknoloji.com)

## PRODUCT PHOTO



## SPECIFICATIONS

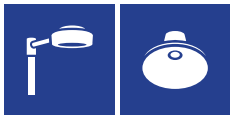
- Default driving method is constant current input
- CCT Range from 2000°K up to 6500°K
- Luminous flux range from 1862 lm to 5967 lm
- Efficacy of the module up to 163 lm/W
- CRI 80 is standart, CRI 70 and CRI 90 are available
- Outstanding system color tolerance MacAdam 3 over the full operating area
- Simple installation (e.g. screw)
- Long life-time > 60,000 hours
- 5 years guarantee at specified conditions



For your orders please call us:

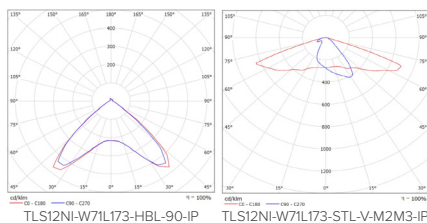
**+90 444 27 33**

## APPLICATIONS



**Street Lighting    High Bay Lighting**

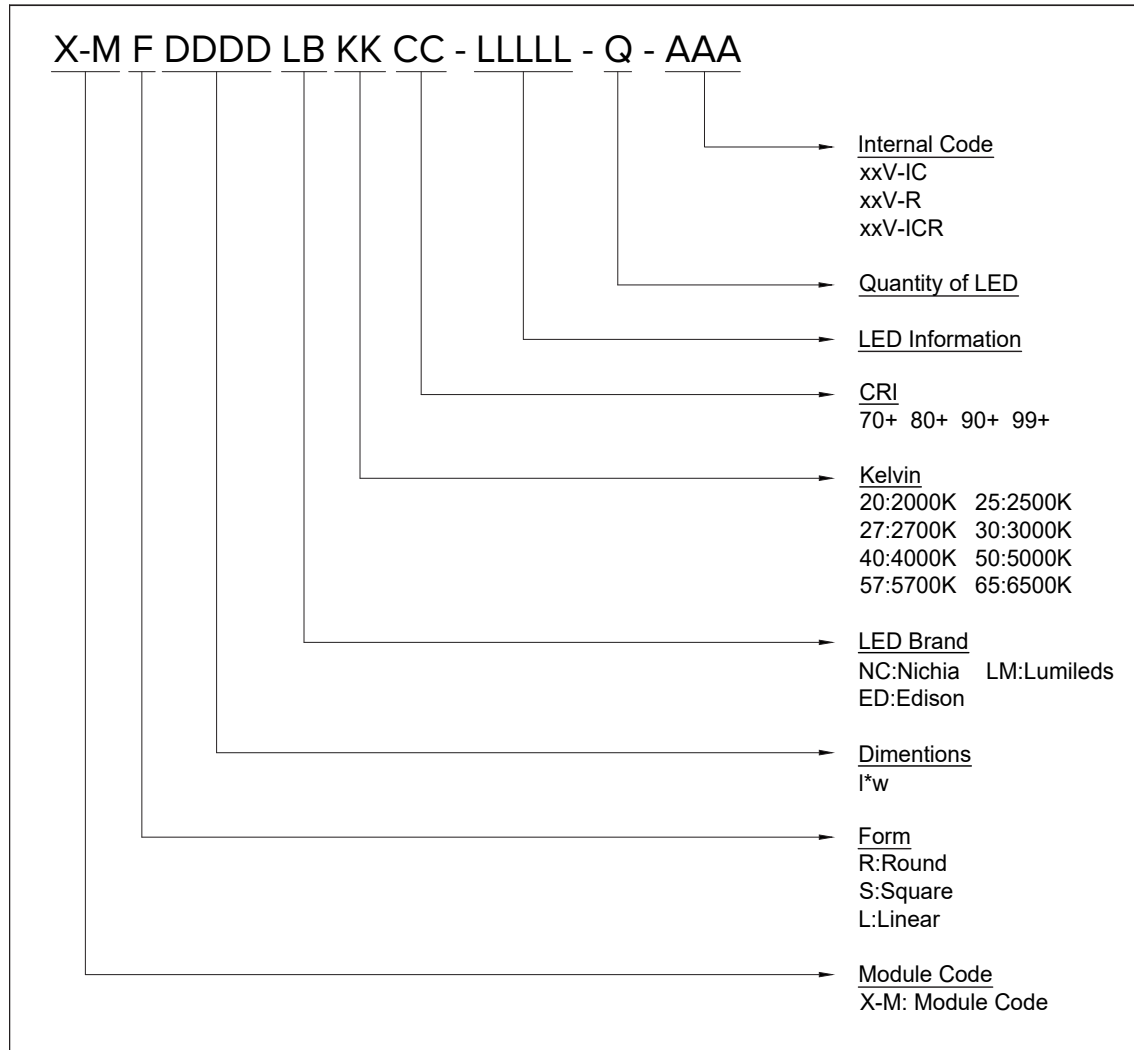
## PHOTOMETRY



## TECHNICAL DATA

Beam Angle	120°
Ambient temperature range	-25° ~ +55°C
Tc max	85°C
Max. DC forward current	1400mA
Typical voltage of LED Module at max current	38 V
Insulation test voltage	2kV
ESD classification	Class 1
Risk group (EN 62471:2008)	2
Type of protection	IP00

## ORDERING INFORMATION



## DRIVING CURRENT VS LUMEN OUTPUT SPECIFICATION

Common Characteristic [ @Tj : 85°C ] ;			
Module Code	X-ML45146NCxx-NVSxE21A-12		
PCB Material	ALU	Electrical Connection	
Operating Temperature (°C)	-40 ~ +85	Parallel	1
Storage Temperature (°C)	-40 ~ +55	Series	12
Thermal Conductivity (W/m-K)	1>	LED Quantity	12
LED	NVSLE21AT		
Correlated Color Temperature (CCT)	4000K		
Color Rendering Index (CRI)	80+		
Module Operating Voltage (V)	32,64	34,20	35,40
Module Operating Current (mA)	350	700	1400
Branch Operating Current (mA)	350	700	1400
Module Power (W)	11,42	23,94	49,56
Module Light Output (lm)	1.862	3.471	5.997
Module Efficiency (lm/W)	163	145	121

The table below shows how to Module Light Output changes depending on CCT (°K)

LED	Lumen Output Multiplier				
	2700°K (CRI 80)	3000°K (CRI 80)	4000°K (CRI 80)	5000°K (CRI 80)	6500°K (CRI 80)
NVSLE21AT	0,75	0,87	1	1	1

## X-ML45146NCxx-NVSxE21A-12 MECHANICAL DRAWINGS

A

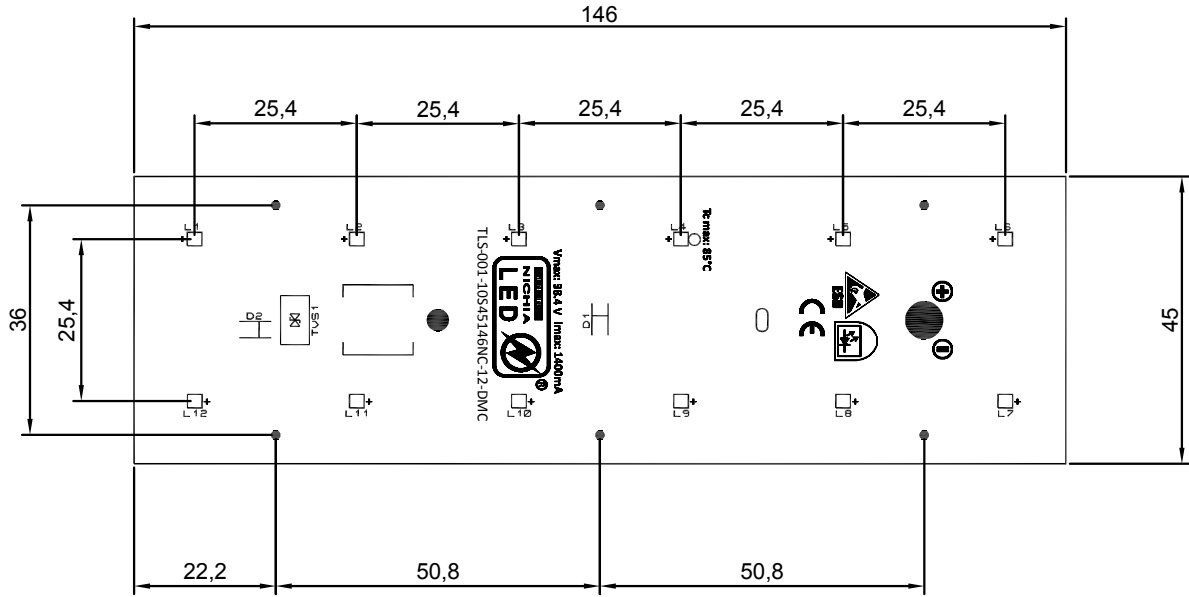
B

C

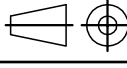

A

B

C



## SERBEST ÖLÇÜ TOLERANSLARI -DIN 2768-1 / General Tolerances for linear and angular dimensions ( DIN ISO 2768-1)

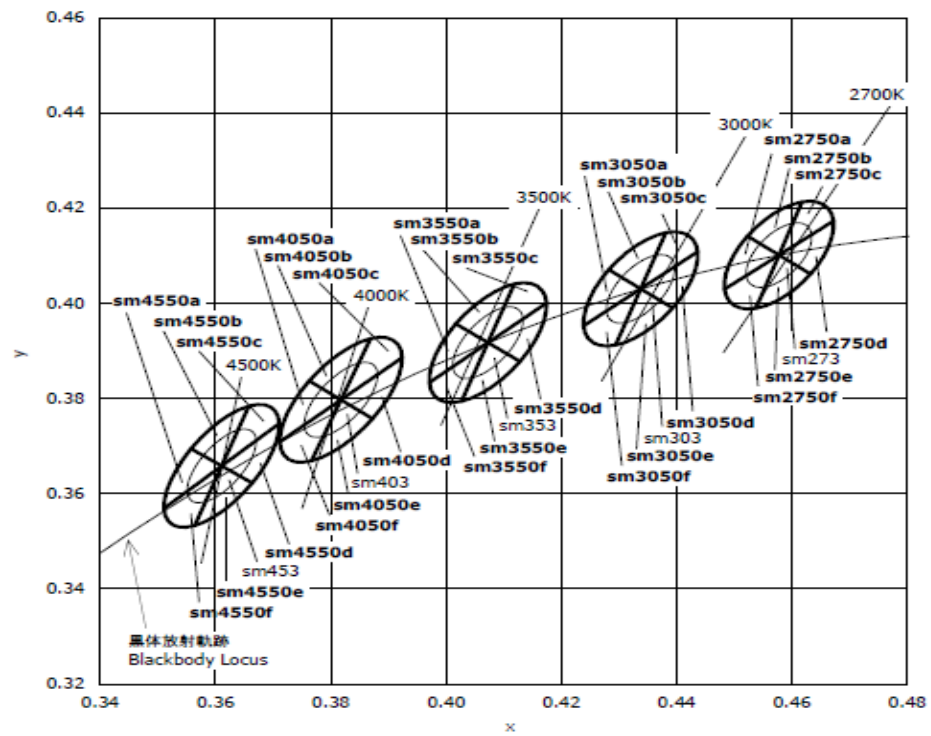
0.5 up to 3mm	over 3 up to 6mm	over 6 up to 30mm	over 30 up to 120mm	over 120 up to 400mm	over 400 up to 1000mm
± 0.1	± 0.1	± 0.2	± 0.3	± 0.5	± 0.8
Stock code No	MALZEME (MATERIAL)		AGIRLIK (WEIGHT)	 OLÇEK / SCALE <b>A4</b>	
Revision	XXX		XXX		
Date	10.12.2019		TLS-001-10S45146NC-12-DMC		
Sheet					
Drawn By	Kaan ALTINTEN				
Checked By	Ibrahim OKMEN				
Approved By	Mesut CINAR				

TLS Teknoloji Sanayi ve Dis Ticaret A.S

This drawing is our property. It cant be reproduced or communicated without our written agreement.

# DATASHEET

**X-ML45146NCxx-NVSxE21A-12**



LIFE TIME

MODEL NUMBER: NVSLE21A

Test Summary:

Data Set	Case Temperature [T <sub>s</sub> ]	Ambient Temperature [T <sub>A</sub> ]	Drive Current [I <sub>F</sub> ]	Lumen Maintenance at 10,000 hours	Chromaticity Shift (Δu'v') at 10,000 hours	TM-21 Projection L <sub>70</sub> (10K)	TM-21 Projection L <sub>80</sub> (10K)	TM-21 Projection L <sub>90</sub> (10K)
1	85 °C	> 80 °C	1050 mA	95.9 %	0.0016	> 60000 hours	> 60000 hours	41500 hours
2	105 °C	> 100 °C	700 mA	94.7 %	0.0016	> 60000 hours	56900 hours	24400 hours
3	105 °C	> 100 °C	1050 mA	93.6 %	0.0020	> 60000 hours	45200 hours	18800 hours
4	120 °C	> 115 °C	700 mA	94.6 %	0.0016	> 60000 hours	> 60000 hours	26800 hours

## LEGAL NOTICE

Product information provided by TLS Teknoloji Sistemleri San ve Dış Tic AŞ ("TLS") in this document is believed to be correct and accurate. TLS reserves the right to change/correct the specifications and other data or information relating to products without notice but TLS accepts no liability for errors that may appear in this document, howsoever occurring, or liability arising from the use or application of any information or data provided herein. Neither the supply of such information, nor the purchase or use of products conveys any licence or permission under patent, copyright, trademark or other intellectual property right of TLS or third parties.

Products sold by TLS are subject to its standard Terms and Conditions of Sale that are available on request. No warranty is given that products do not infringe the intellectual property rights of third parties, and furthermore, the use of products in certain ways or in combination with TLS, or non-TLS furnished equipments/components may infringe intellectual property rights of TLS.

The purpose of this document is to provide information only and it may not be used, applied or reproduced (in whole or in part) for any purpose nor be taken as a representation relating to the products in question. No warranty or guarantee express or implied is made concerning the capability, performance or suitability of any product, and information concerning possible applications or methods of use is provided for guidance only and not as a recommendation. The user is solely responsible for determining the performance and suitability of the product in any application and checking that any specification or data it seeks to rely on has not been superseded.

Products are intended for normal commercial applications. For applications requiring unusual environmental requirements, extended temperature range, or high reliability capability (e.g. military, or medical applications), special processing/testing/conditions of sale may be available on application to TLS.

## CONTACT

**TLS Teknoloji Sistemleri San ve Dış Tic AŞ**

Akçaburgaz Mahallesi 3080. Sokak No:5 Esenyurt / İstanbul / TURKEY

info@tsteknoloji.com  
+90 444 27 33