

PRODUCT PHOTO



SPECIFICATIONS

- Default driving method is constant current input
- CCT Range from 2700K up to 6500K
- This module is standard and can be connected as 32 Series 4 Parallel.
- Luminous flux range from 1352 lm to 11709.83 lm
- Efficacy of the module up to 200 lm/W
- CRI 80 is standard, CRI 70 and CRI 90 are available
- Outstanding system color tolerance MacAdam 3 over the full operating area
- Simple installation (e.g. screw)
- Long life-time > 60,000 hours
- 5 years guarantee at specified conditions



For your orders please call us:

+90 444 27 33

APPLICATIONS

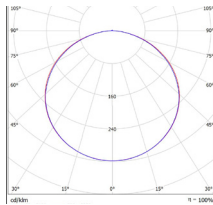


Industrial
Lighting



linear Light

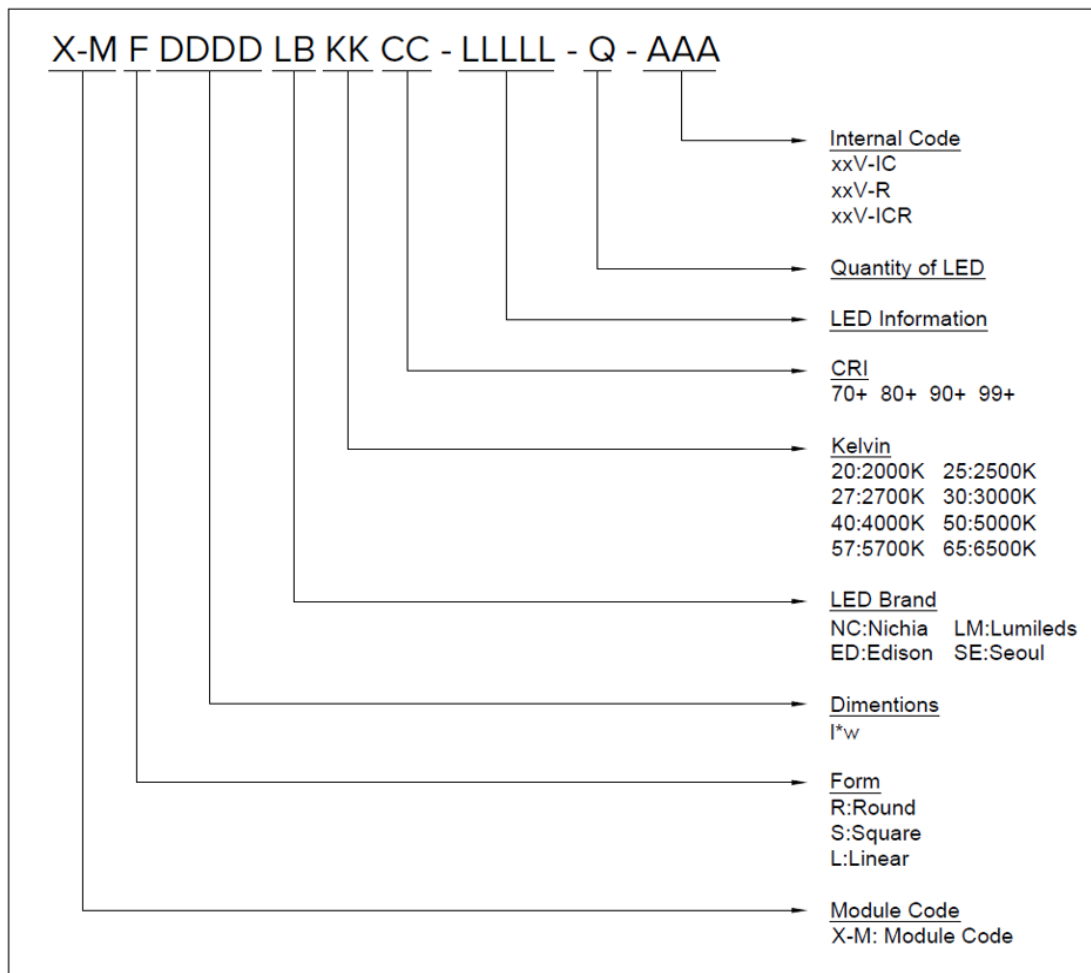
PHOTOMETRY



TECHNICAL DATA

Beam Angle	120°
Ambient temperature range	-25° ~ +55°C
Tc max	85°C
2835SA-A1	
Max. DC forward current	700mA
Typical voltage of LED Module at max current	116V
Insulation test voltage	2kV
ESD classification	Class 1
Risk group (EN 62471:2008)	2
Type of protection	IP00

ORDERING INFORMATION



DRIVING CURRENT VS LUMEN OUTPUT SPECIFICATION

Common Characteristic [@Tj : 85°C] ;			
Module Code	X-ML201400LM-4080-2835SA-160		
PCB Material	FR4	Electrical Connection	
Operating Temperature (°C)	-40 ~ +100	Parallel	4
Storage Temperature (°C)	-40 ~ +55	Series	40
Thermal Conductivity (W/m-K)	1>	LED Quantity	160
LED	2835SA-A1		
Correlated Color Temperature (CCT)	4000K		
Color Rendering Index (CRI)	80+		
Module Operating Voltage (V)	108	110	113
Module Operating Current (mA)	248	348	500
Branch Operating Current (mA)	62	87	125
Module Power (W)	26,88	38,42	56,60
Module Light Output (lm)	5.069	6.954	9.685
Module Efficiency (lm/W)	189	181	171

The table below shows how to Module Light Output changes depending on CCT (K)

LED	Lumen Output Multiplier				
	2700K (CRI 80)	3000K (CRI 80)	4000K (CRI 80)	5000K (CRI 80)	6500K (CRI 80)
2835SA-A1	0,97	0,984	1	1	1

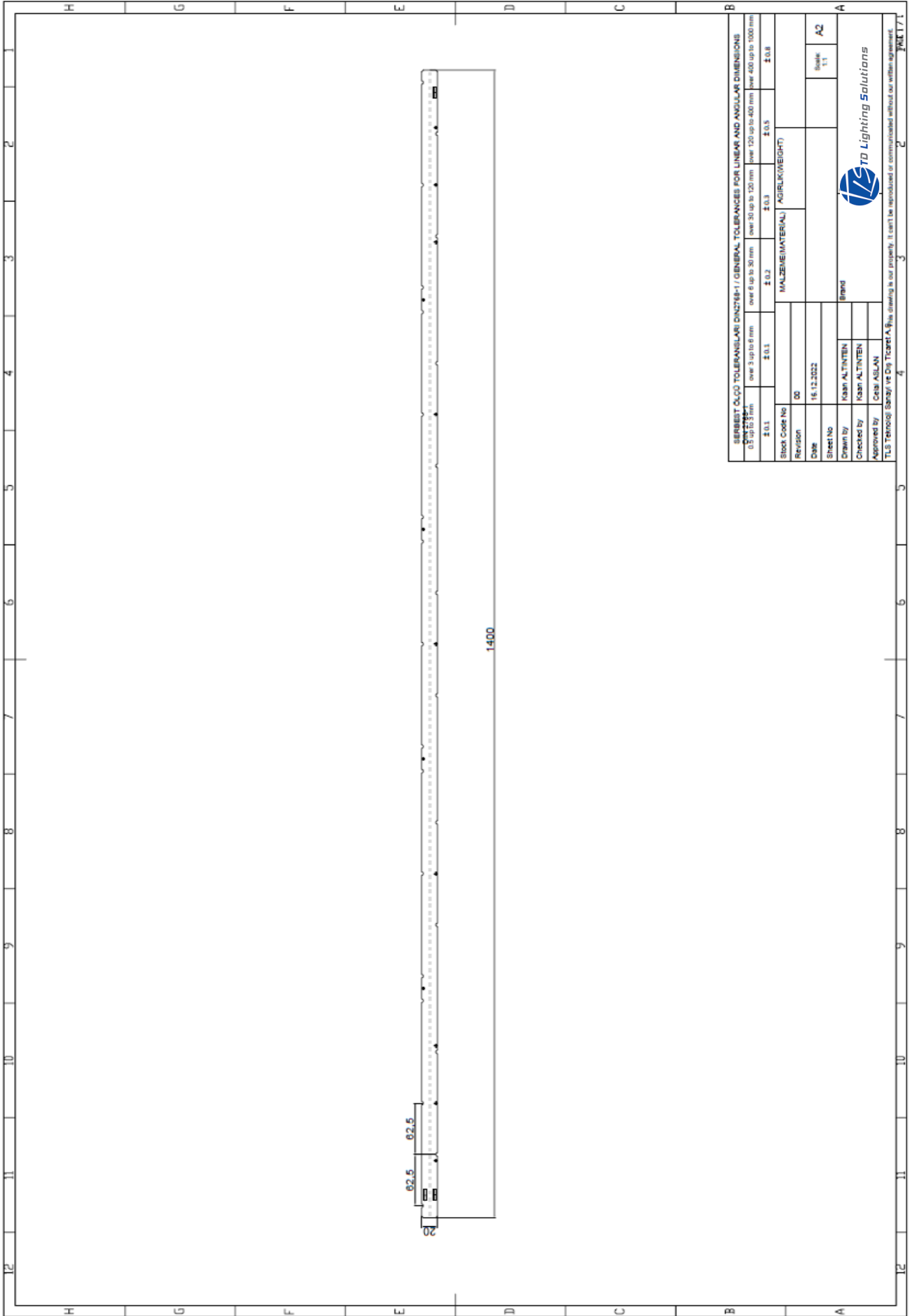
Relative luminous intensity versus CCT (K)

X-ML201400LM-4080-2835SA-160 MECHANICAL DRAWINGS

DATASHEET

X-ML201400LM-4080-2835SA-160

TD Lighting Solutions



CCT AND BINNING INFORMATION

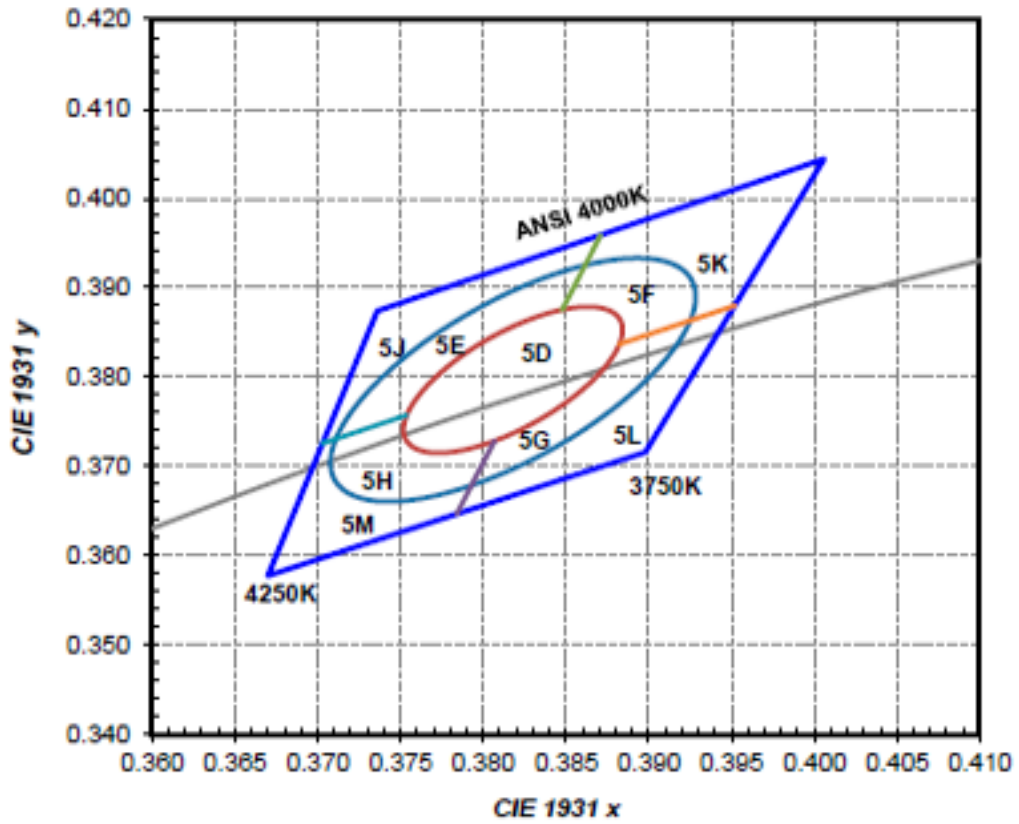


Figure 8e. 1/9th color bin structure for LUXEON 2835E and LUXEON 2835C 4000K at specified test current and binning temperatures of $T_j=25^{\circ}\text{C}$ and $T_j=85^{\circ}\text{C}$.

LIFE TIME

MODEL NUMBER: 2835SA



IESNA LM-80-08

MEASURING LUMEN MAINTENANCE OF LED LIGHT SOURCES

MEASUREMENT AND TEST REPORT For

Lumileds Holding B.V.

370 W. Trimble Road, San Jose, CA 95131, USA

Model:L128-3080RA35000Q1

Report Type: 9000 Hours Test Report	Product Type: LED Package
Test Engineer: Daniel Duan	<i>Daniel Duan</i>
Report Number: R2DG180817050-10	
Test Date: 2015-04-02 to 2016-04-11	
Report Date: 2018-08-17	
Reviewed By: Bill Xiong / EE Engineer	<i>Bill Xiong</i>
Prepared By:	Bay Area Compliance Laboratories Corp. (Dongguan). No.69, Pulongcun, Puxinhu Industry Area, Tangxia, Dongguan, Guangdong, China. Tel: +86-0769-86858888 Fax: +86-0769-86858588



Note: The test data was only valid for the test sample(s). This test report is prepared for the customer shown above and for the device described herein. It may not be duplicated or used in part without prior written consent from Bay Area Compliance Laboratories Corp. (Dongguan).
This report is valid only with a valid digital signature. The digital signature may be available only under the Adobe software above version 7.0.

LEGAL NOTICE

Product information provided by TLS Teknoloji Sistemleri San ve Dış Tic AŞ ("TLS") in this document is believed to be correct and accurate. TLS reserves the right to change/correct the specifications and other data or information relating to products without notice but TLS accepts no liability for errors that may appear in this document, howsoever occurring, or liability arising from the use or application of any information or data provided herein. Neither the supply of such information, nor the purchase or use of products conveys any licence or permission under patent, copyright, trademark or other intellectual property right of TLS or third parties.

Products sold by TLS are subject to its standard Terms and Conditions of Sale that are available on request. No warranty is given that products do not infringe the intellectual property rights of third parties, and furthermore, the use of products in certain ways or in combination with TLS, or non-TLS furnished equipments/components may infringe intellectual property rights of TLS.

The purpose of this document is to provide information only and it may not be used, applied or reproduced (in whole or in part) for any purpose nor be taken as a representation relating to the products in question. No warranty or guarantee express or implied is made concerning the capability, performance or suitability of any product, and information concerning possible applications or methods of use is provided for guidance only and not as a recommendation. The user is solely responsible for determining the performance and suitability of the product in any application and checking that any specification or data it seeks to rely on has not been superseded.

Products are intended for normal commercial applications. For applications requiring unusual environmental requirements, extended temperature range, or high reliability capability (e.g. military, or medical applications), special processing/testing/conditions of sale may be available on application to TLS.

CONTACT

TLS Teknoloji Sistemleri San ve Dış Tic AŞ

Akçaburgaz Mahallesi 3080. Sokak No:5 Esenyurt / İstanbul / TURKEY

info@tsteknoloji.com
+90 444 27 33