



# TUV Amalgam XPT systems

## TUV 325W XPT HO SE UNP/20

Philips TUV Amalgam XPT system consists of an electronic driver that operates one TUV Amalgam XPT lamp, mounted in a sleeve. The electrical specifications are tailored to the lamp, ensuring an optimized performance of the Philips TUV Amalgam XPT system. Thanks to extensive testing before a lamp system is released, we can ensure maximum reliability and long lifetime. Signify offers the XPT system solution for the TUV 130W XPT, TUV 180W XPT, TUV 200W XPT and TUV 325W XPT lamps. For the other lamp types we support in advising the correct drivers available in the market.

### Warnings and Safety

- A lamp breaking is extremely unlikely to have any impact on your health. If a lamp breaks, ventilate the room for 30 minutes and remove the parts, preferably with gloves. Put them in a sealed plastic bag and take it to your local waste facilities for recycling. Do not use a vacuum cleaner.
- DANGER: Risk Group 3 Ultra Violet product. These lamps emit high-power UV radiation that can cause severe injury to skin and eyes. Avoid eye and skin exposure to unshielded product. Use only in an enclosed environment which shields users from the radiation.
- Plants and/or materials that are exposed to UV-C and/or ozone for a long time may become damaged and/or discolored.

### Product data

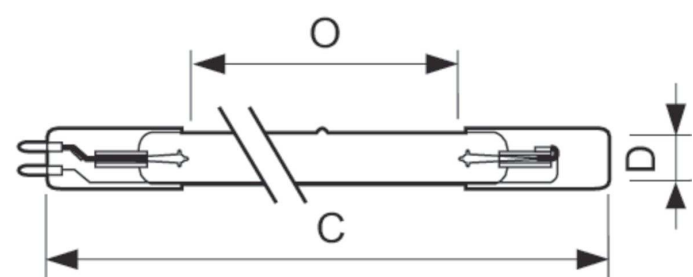
General Information		Operating and Electrical	
Cap-Base	G10.2Q [ G10.2q]	Power (Nom)	325 W
Operating Position	UNIVERSAL [ Any or Universal (U)]	Lamp Current (Nom)	2.1 A
Main Application	Disinfection	Ignition Supply Voltage (Min)	158 V
Light Technical		Controls and Dimming	
Depreciation at Useful Lifetime	15 %	Dimmable	Yes

TUV Amalgam XPT systems

Product Data	
Full product code	872790080446100
Order product name	TUV 325W XPT HO SE UNP/20
EAN/UPC - Product	8718291548348
Order code	928107005112
Numerator - Quantity Per Pack	1

Numerator - Packs per outer box	20
Material Nr. (12NC)	928107005112
Net Weight (Piece)	0.310 kg

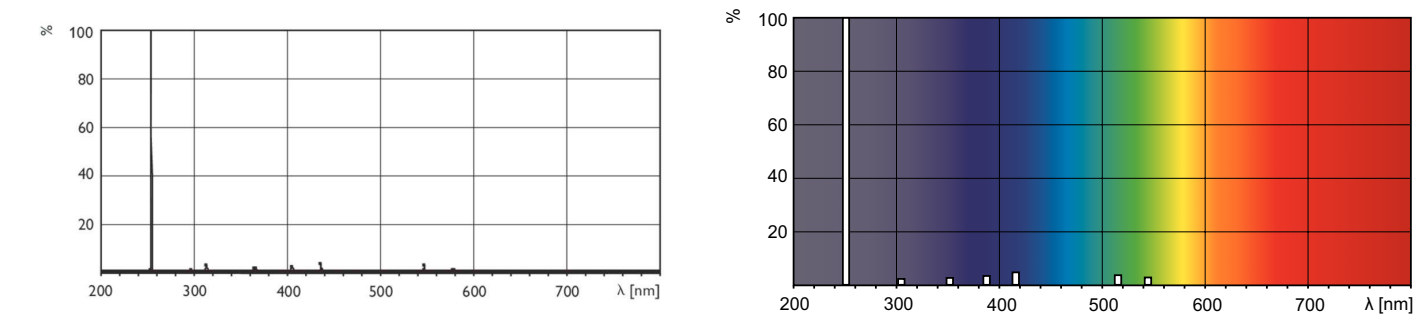
Dimensional drawing



Product	D	O	C (max)
TUV 325W XPT HO SE UNP/20	19 mm	1480 mm	1582 mm

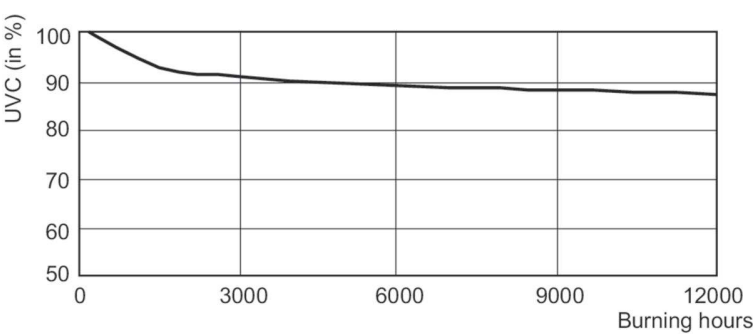
TUV 340W XPT HO SE

Photometric data



XDPB\_XDTUVXPT-Spectral power distribution B/W

Lifetime



XDLM\_XDTUVXPT\_0006-Lumen maintenance diagram

## TUV Amalgam XPT systems

