



# PRODUCT SPECIFICATION

<b>Part Name</b>	Aluminum Screw Breather Vent Plug
<b>Customer</b>	
<b>Voir P/N</b>	VV-MOAM16P3A-B3A
<b>Customer P/N</b>	
<b>Issue Date</b>	2016-06-09

Checked		Prepared	
Li zuo jun		Zeng zhi	
Customer Approve/客户核准			
—			
—			



ADD: Hechang Road East 4 NO. 4 Ares,Zhongkai  
New and High-tech Industries Development  
Zone,Huizhou City Guangdong Province,China  
Http: [www.voir-tech.com.cn](http://www.voir-tech.com.cn)  
TEL: +86 752-2089356 FAX: +86 752-2089380

Component	
Body Material	Aluminum
Membrane	e-PTFE
Parameter	
Airflow	527ml/min at $\Delta p=70\text{mbar}$
IP	IP67
Temperature Range	-40 -150 °C
Specification	M16X1.5
Benefit for Outdoor Equipment	

- Vent in high airflow to balance the pressure between outside and inside of the enclosure and lower down the strain for the housing.
- Inserting the oleophobic and hydrophobic membrane into the body to make it chemically inert and UV resistant.
- It is easy to install which is just to screw into the housing, and with the silica sealing ring at the opening to make sure the air tightness.
- Evidently reducing fog and condensation
- The e-PTFE membrane can stop the salt crystal and vapor permeability to make it a long service life and free from breakdown or maintenance even under harsh working environment



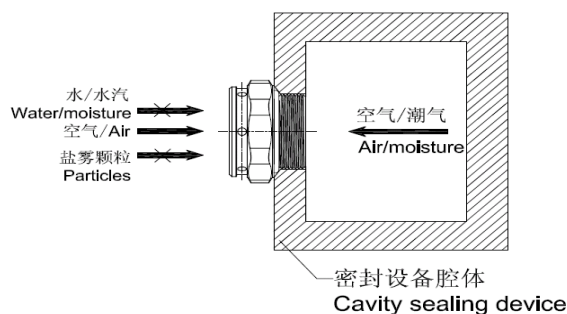
## Part NO.#VV-MOAM16P3A-B3A

**MOAM16** is a aluminum screw-in protective breather valve with e-PTFE membrane welded inside. It is high temperature resisting and not easy to get oxidized, which makes it widely used. After WEP test, IP67 is confirmed

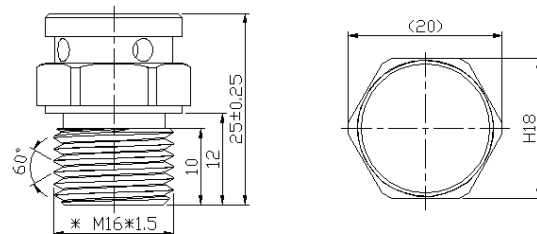
## Application:

Applicable for outdoor lighting, transmission system, outdoor communication equipment and any other outdoor equipment that need to be waterproof and vent.

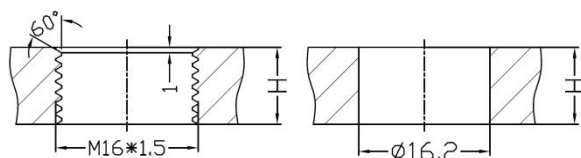
## Practical Principle



## Detailed Spec.



## Installation Suggestion



Suggestion 1

Suggestion 2

## Parameter

Part NO.	Material	Diameter/mm	Parameter
VV-MOAM16P3A-B3A	Aluminum & e-PTFE Membrane	Total High: 25 Screw Length: 12	A/P: 527ml/min at $\Delta p=70\text{mbar}$ WIP: IP67

H-Housing Thickness,  $\phi$ -Hole Diameter; Torsions : 0.6N-0.8N.m

1. When the housing thickness is  $>3\text{mm}$ , it suggest drilling M16\*1.5mm threaded hole and use silicone O-ring to seal the entrance. Please refer to Suggestion 1.

2. When the housing thickness is  $\leq 3\text{mm}$ , it is suggest drilling  $\phi 16.2 \pm 0.1\text{mm}$  straight hole and lock with nut. Flat silicone ring would seal the entrance. Please refer to Suggestion 2.

**Customization:** Voir Tech's protective vents can be customized to match your products in spec., color, property and even provide specific solution. For more information, please contact us.