

VISO SYSTEMS LabSpion

Assembly Manual

Revision: 2020-09



Congratulations on purchasing your new Viso Systems product. Before using this product, please read the Safety Information.

This manual contains descriptions and troubleshooting necessary to install and operate your new Viso Systems product. Please review this manual thoroughly to ensure proper installation and operation.

For news, Q&A and support at Viso Systems, visit our website at www.visosystems.com

© 2020 Viso Systems ApS, Denmark

All rights reserved. No part of this manual may be reproduced, in any form or by any means, without permission in writing from Viso Systems ApS, Denmark. Information subject to change without notice. Viso Systems ApS and all affiliated companies disclaim liability for any injury, damage, direct or indirect loss, consequential or economic loss or any other loss occasioned by the use of, inability to use or reliance on the information contained in this manual.

Contents

1.	Package content and weight	4
	Main components/assemblies.....	4
	Other components included in the package:	5
	Assembly parts and cables	5
2.	Package dimensions and weight.....	7
3.	Assembly.....	8
3.1.	Mount Base on Stand.....	8
3.2.	Assemble C-Plane Gonio – Lamp Bracket	9
3.3.	Attach Steel Pins to Tower	10
3.4.	Tower + C-Plane Gonio.....	11
3.5.	Level Base.....	12
3.6.	Slide Tower onto the Base	12
3.7.	Mount Sensor on Tripod	13
3.8.	Cable connections.....	14

1. Package content and weight

Main components/assemblies

Base – 25Kg



Tower – 13Kg



Stand – 20kg



C-Plane Head 6Kg



Tripod – 5kg



C-Plane Bracket – 3Kg



Cali T50 – 3kg



Sensor – 2Kg



Other components included in the package:

Lamp Holder E27 – 0,5kg



Cross Hair Laser 0,5kg



Laser Distance Plate 0,1kg



Assembly parts and cables

1 x IEC 2m Cable



1 x USB 5m Cable



1 x RJ45 3m Cable



1 x RJ45 25m Cable



2 x Steel Rod with angle



1 x Steel Rod



4 x Caps for Steel Rod



3 x Handles for base



2 x Handles for Lamp Brackets



2 x Lamp Brackets



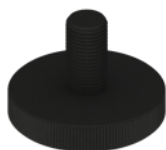
2 x Spacer for Lamp Brackets



8 x Spacer for C-Plane



3 x Screws for Base



8 x Screws for C-Plane



2 x Thumb screws for Laser distance Plate



Adaptors: E14, B22, GU10



2. Package dimensions and weight

Shipping Packages	Shipping Dimensions	Shipping Volume	Weight
1. Sensor + Cali	560 x 565 x 350 mm	0.111 m ³	6 kg
2. Base	510 x 510 x 220 mm	0.057 m ³	27 kg
3. Bracket + Tripod + Assembly Parts	1,655 x 295 x 320 mm	0.156 m ³	8 kg
4. Tower + C-plane Gonio	455 x 350 x 1,180 mm	0.188 m ³	25 kg
5. Stand	610 x 605 x 820 mm	0.814 m ³	24 kg

Total shipping weight: 90 kg.

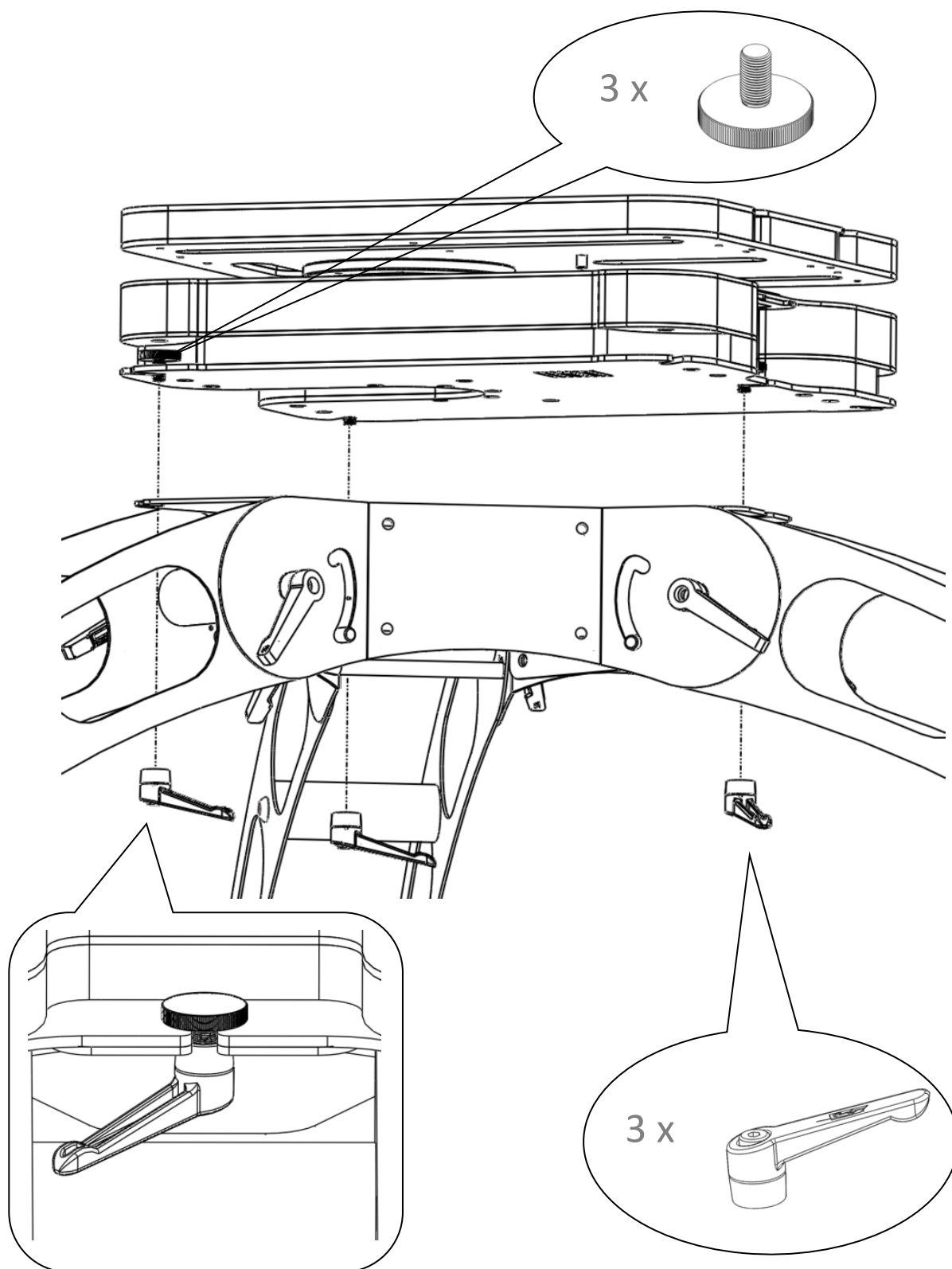
Total shipping CBM: 1,814 m³

The shipment is done in a total of 5 packages.

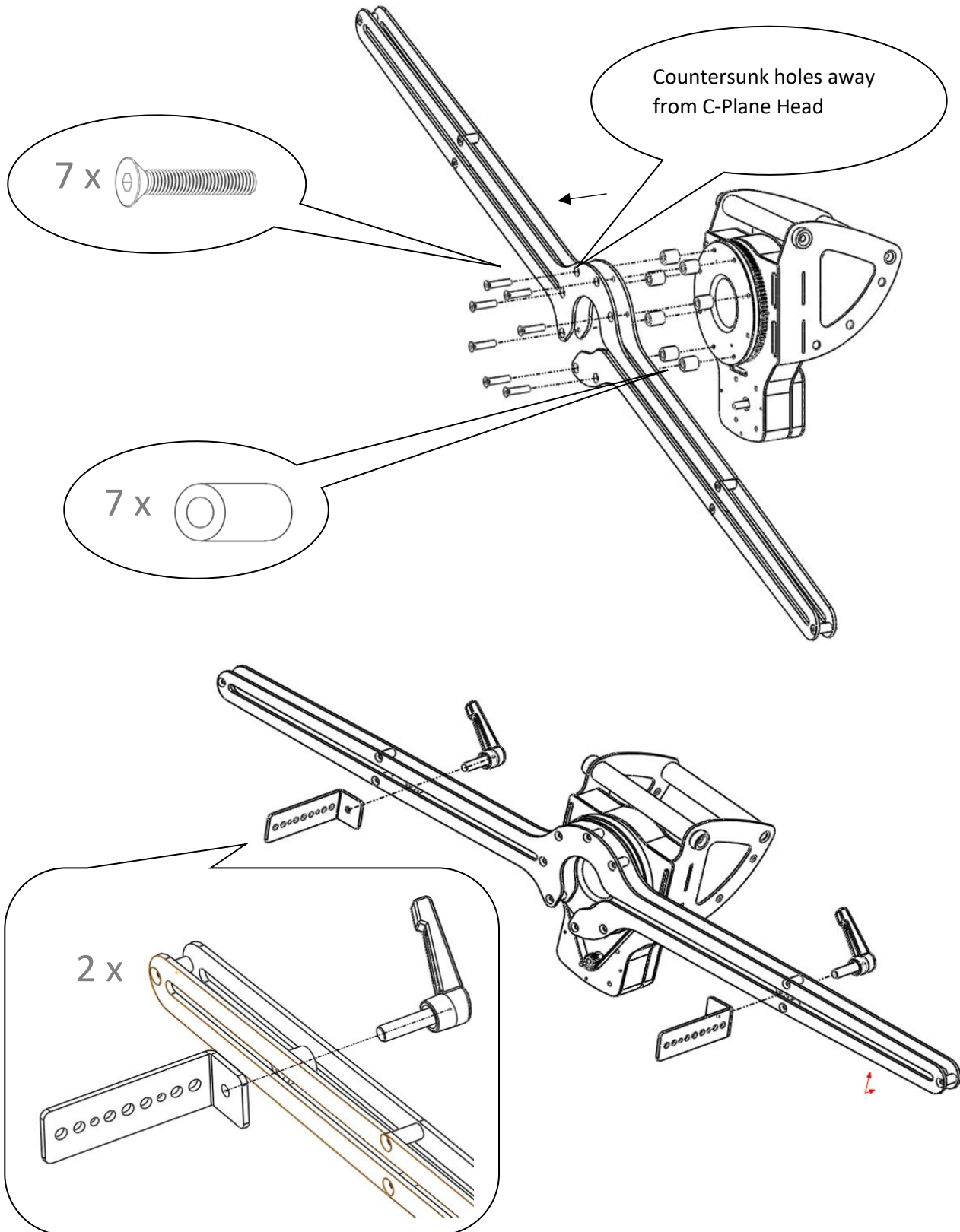
Dimensions on a single pallet: L:168 W:90 H:120

3. Assembly

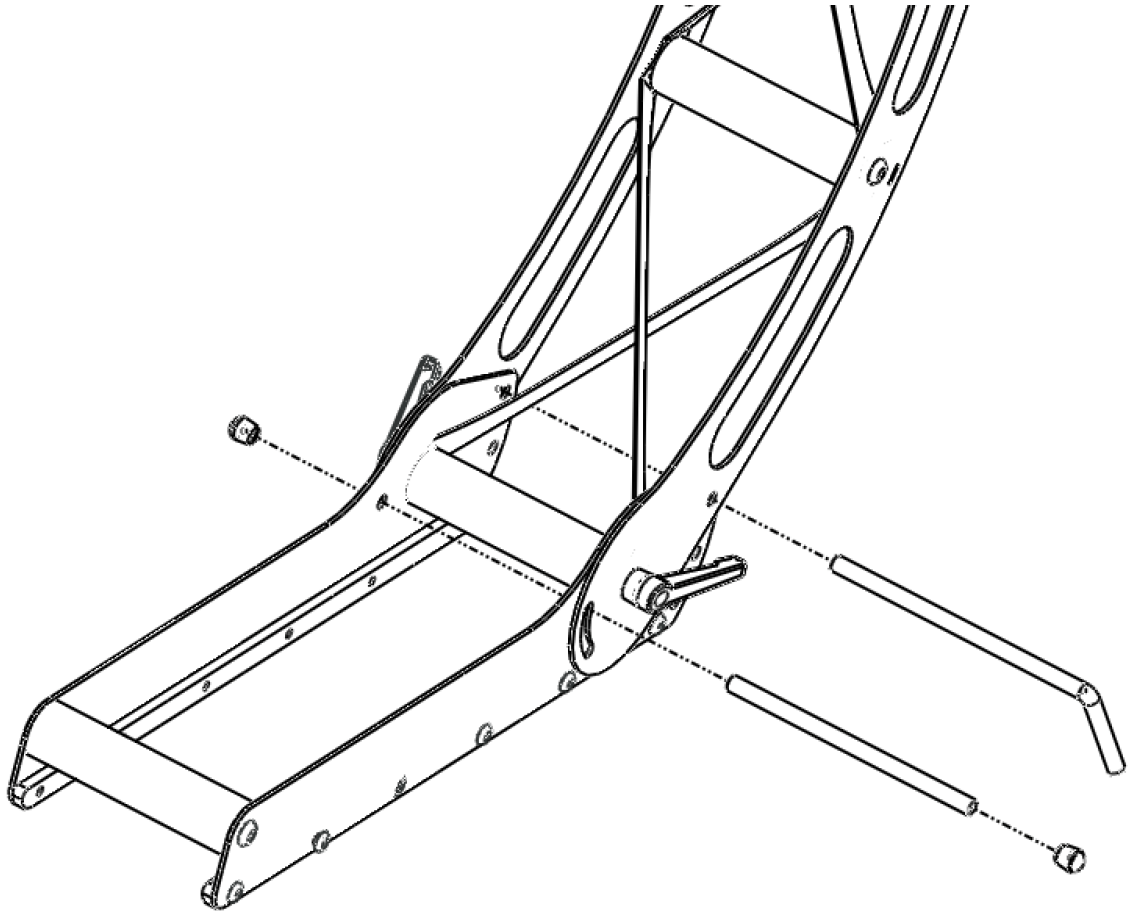
3.1. Mount Base on Stand



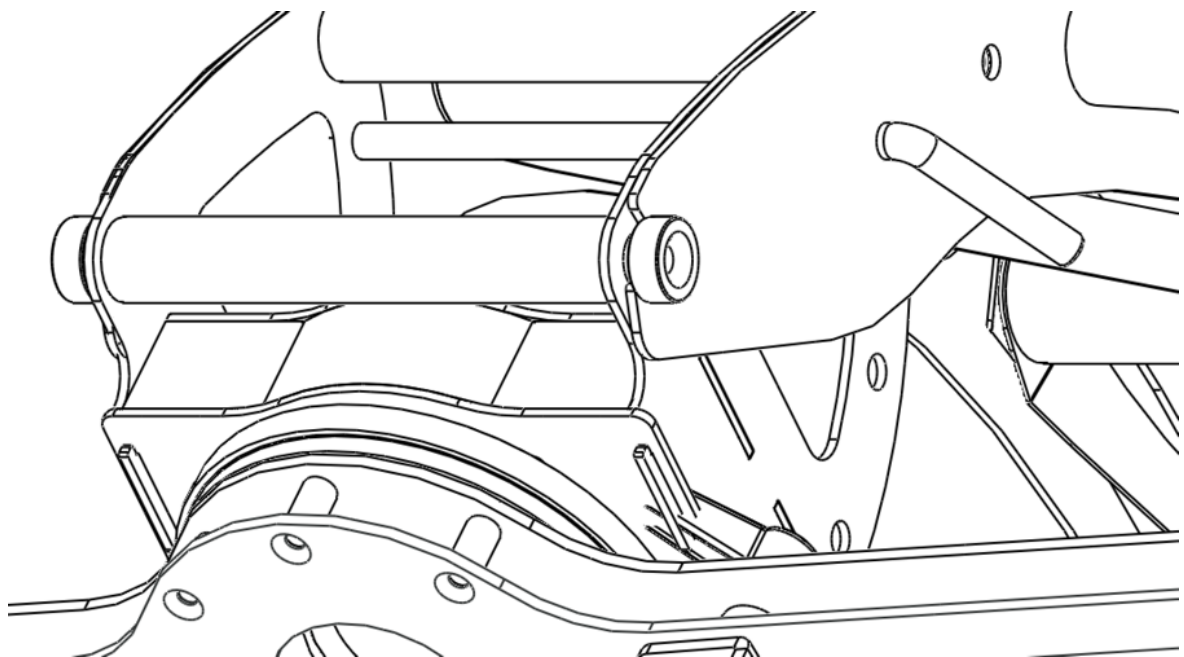
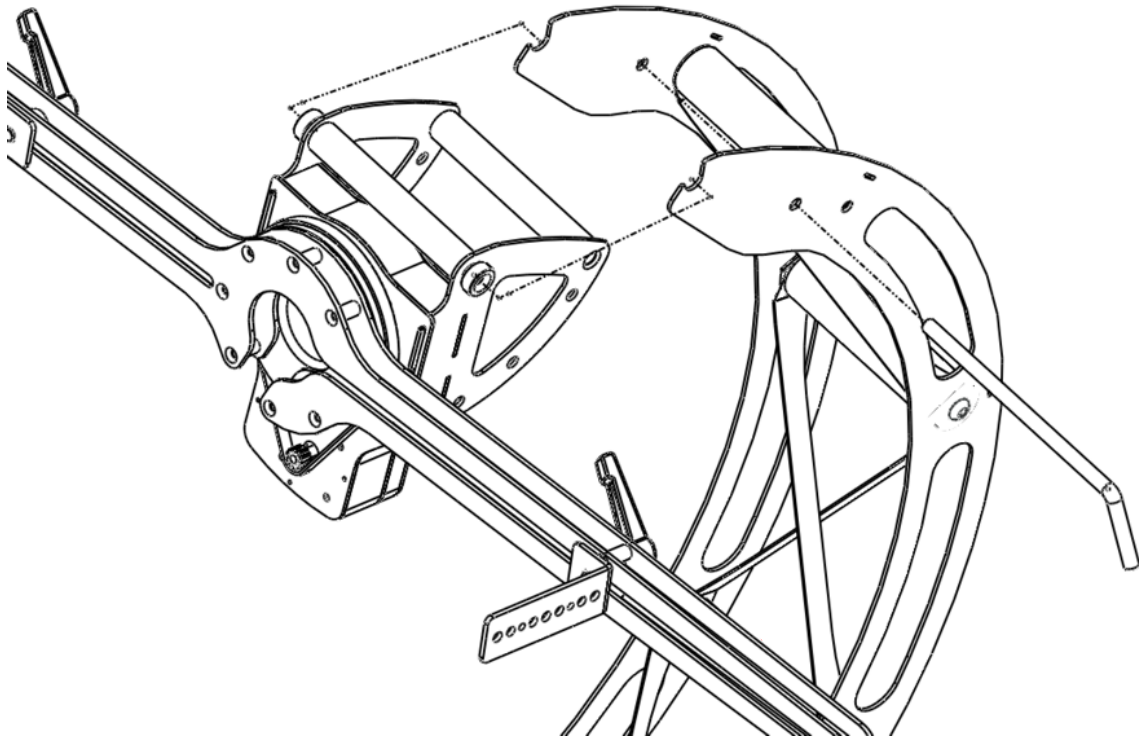
3.2. Assemble C-Plane Gonio – Lamp Bracket



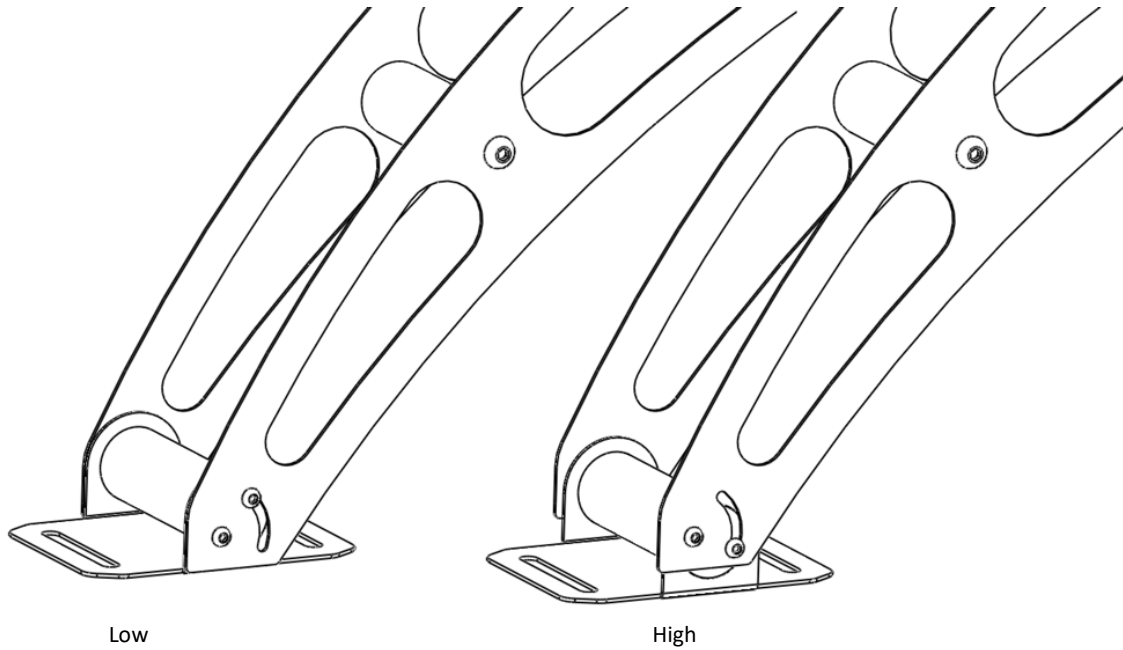
3.3. Attach Steel Pins to Tower



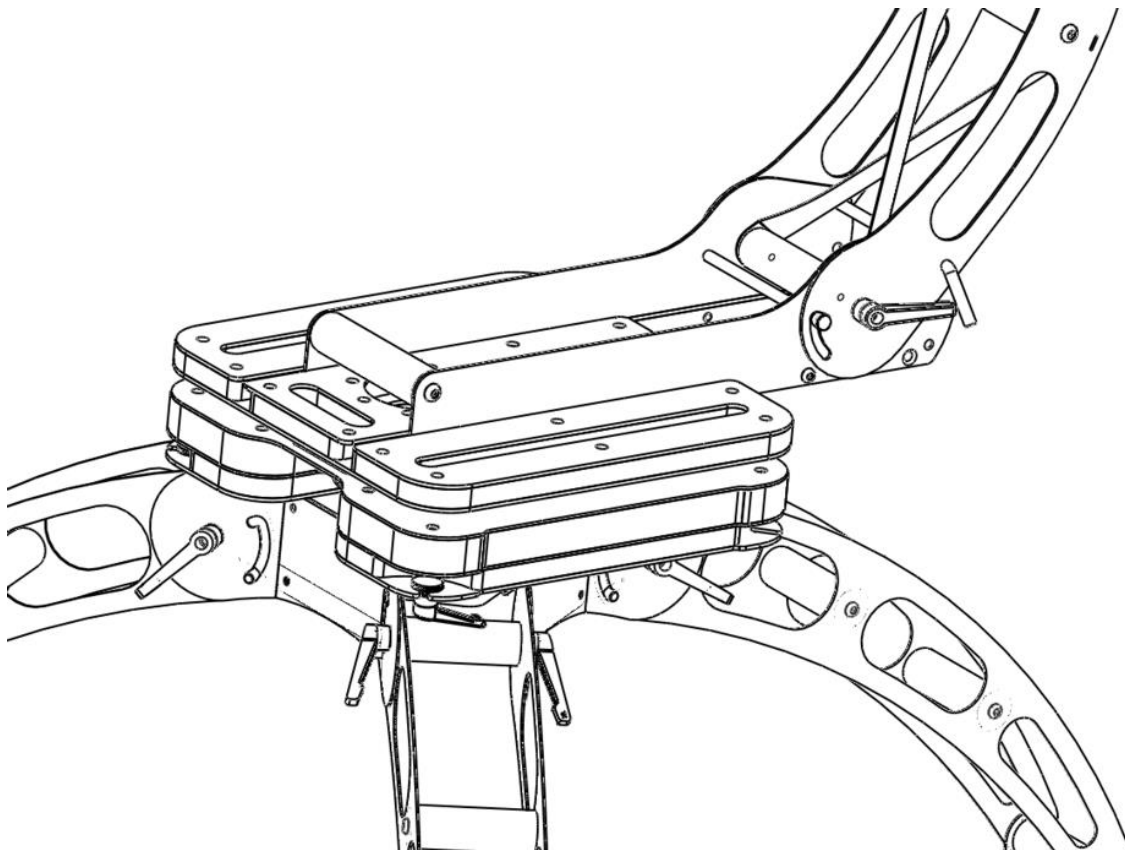
3.4. Tower + C-Plane Gonio



3.5. Level Base



3.6. Slide Tower onto the Base

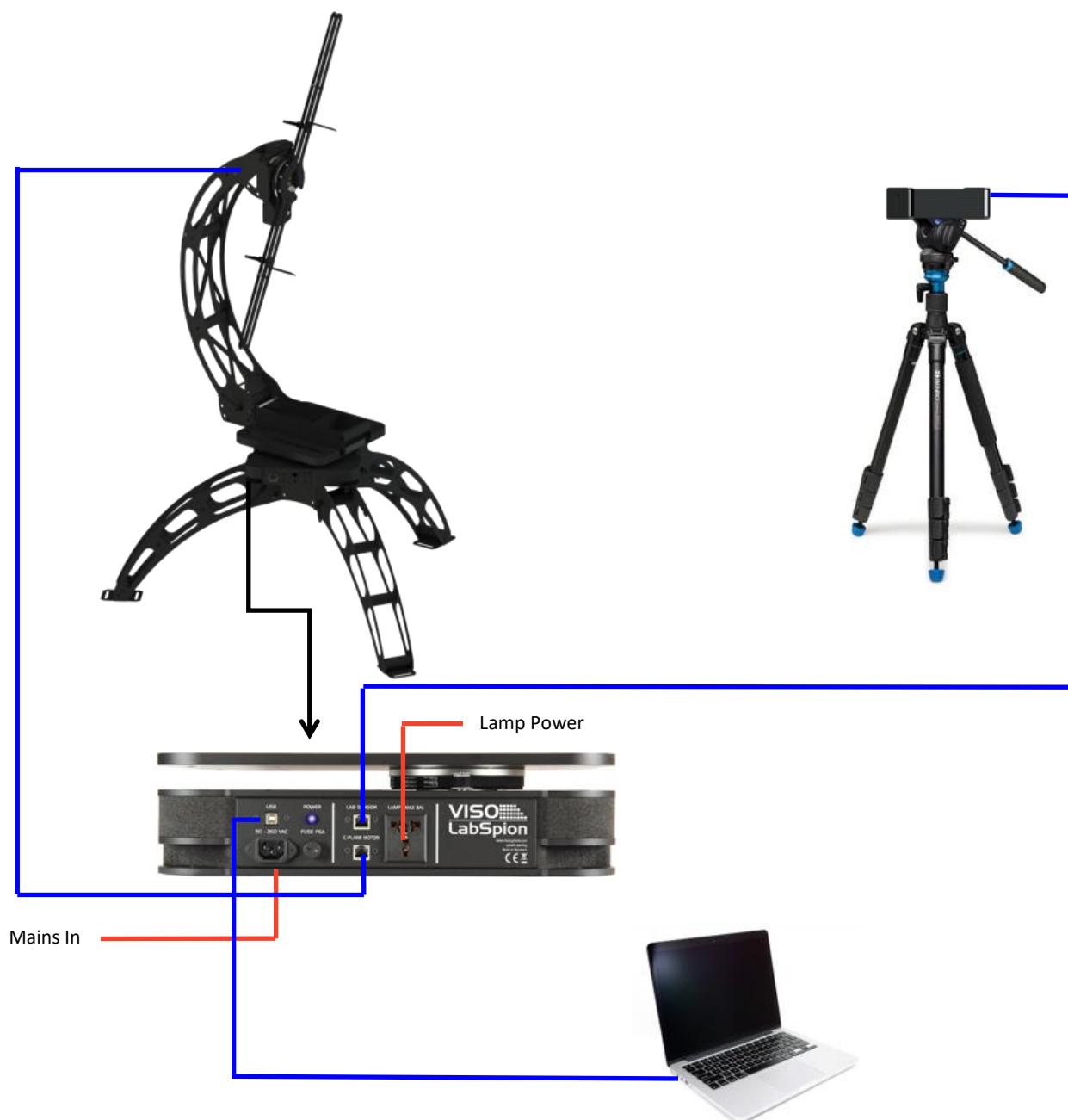


3.7. Mount Sensor on Tripod



3.8. Cable connections

Below is a connection diagram showing the cable configuration. Please refer to the user manual for further details.





Light measurement made easy
